

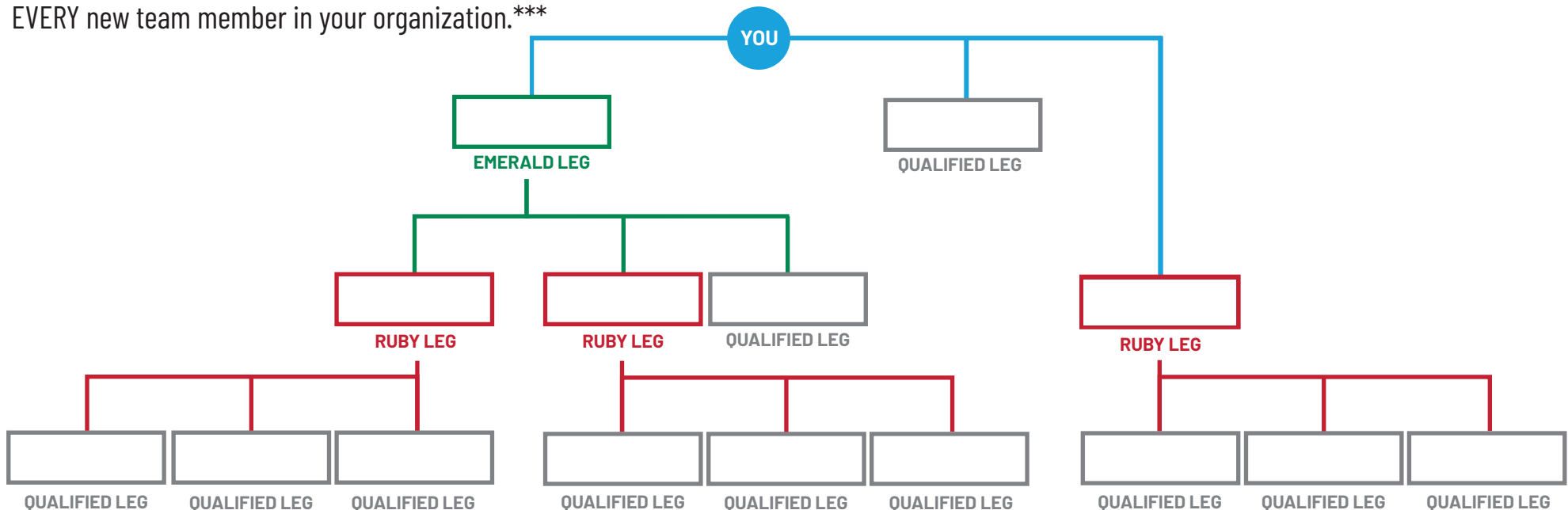
AVERAGE EARNINGS: \$2,022 / MONTH*

Requirements: 3 Qualified Legs (1 being a Ruby Leg and 1 being an Emerald Leg) and 8,000 Total Group Volume**

Earnings from your team's activity: 10% on your first two levels, 5% on your third, fourth, and fifth levels, plus 2% on your sixth level or deeper (infinitely) or through the fifth level of the next Emerald or higher in your organization.***

Generation Bonuses: Become a talent scout. As you find new leaders, earn up to 9% on their team's activity!***

New Distributor Leadership Bonuses: Start building new legs and you can earn an additional \$80-\$150 on EVERY new team member in your organization.***



*See the 2016 Income Disclosure Statement in your eSuite Document Library.

**A Qualified Leg is one with an Active Distributor and at least 400 total Group Volume coming from anywhere in the depth of the Leg. The top Distributor of a Leg does not have to be Commission Qualified for the Leg to be considered a Qualified Leg.

***See the It Works! Compensation Plan for full details on Qualifications and Bonus Payout. A Ruby Leg requires at least 2,000 total Group Volume and an Emerald Leg requires at least 5,000 total Group Volume.